



# INSTRUCTION BULLETIN

No. 9015138  
Machine: M17  
Published: 01-2019  
Rev. 00

**NOTE: DO NOT DISCARD the Parts List from the Instruction Bulletin. Place the Parts List in the appropriate place in the machine manual for future reference. Retaining the Parts List will make it easier to reorder individual parts and will save the cost of ordering an entire kit.**

*NOTE: Numbers in parenthesis ( ) are reference numbers for parts listed in Bill of Materials.*

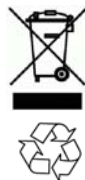
Installation instructions for **kit number 9017122**

## SYNOPSIS:

This kit contains the parts needed to install a scrubbing side brush on M17 sweeper scrubbers. Please follow step-by-step instructions.

## SPECIAL TOOLS / CONSIDERATIONS: NONE

(Estimated time to complete: 5- 6 hours)



## PROTECT THE ENVIRONMENT

Please dispose of packaging materials, used machine components such as batteries and fluids in an environmentally safe way according to local waste disposal regulations.

Always remember to recycle.

## PREPARATION:

1. Empty the recovery tank and the solution tank before jacking up the machine. Refer to the OPERATION section of the OPERATOR MANUAL for instructions how to empty the tanks.
2. Park the machine on a clean level surface, turn off the machine, set the parking brake, and remove the key.

**FOR SAFETY: Before leaving or servicing machine, stop on level surface, turn off machine, set parking brake, and remove key.**

3. Disconnect the battery cable from the machine.

 **WARNING: Always disconnect battery cables from machine before working on electrical components.**

4. Chock both rear wheels.

5. Use a jack or hoist to raise the front end of the machine high enough from the floor to access/install parts in the area near the front of the machine where the scrubbing side brush will be installed. Place jack stands under the machine and lower the machine onto the jack stands. Refer to the MAINTENANCE section of the OPERATOR MANUAL for instructions and safety information about how to jack up the machine.

**FOR SAFETY: When servicing machine, block machine tires before jacking machine up. Use a hoist or jack that will support the weight of the machine. Jack machine up at designated locations only. Support machine with jack stands.**

**INSTALLATION:**

1. Remove parts and components necessary to install the scrubbing side brush onto the machine.
2. Assemble the scrubbing side brush onto the machine per Figure 1 through Figure 8.
3. Reinstall all parts and components removed from the machine to install the scrubbing side brush kit.

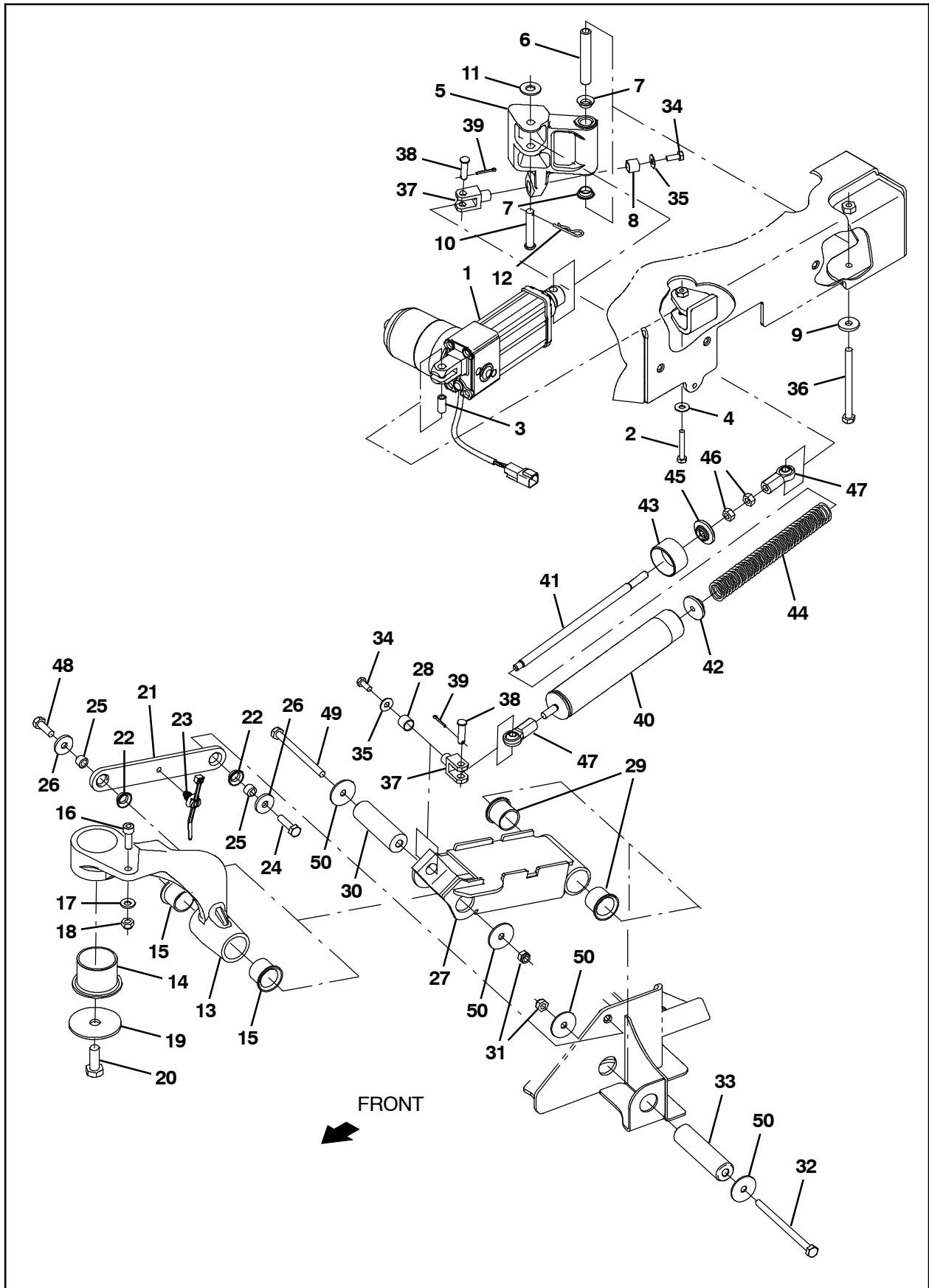
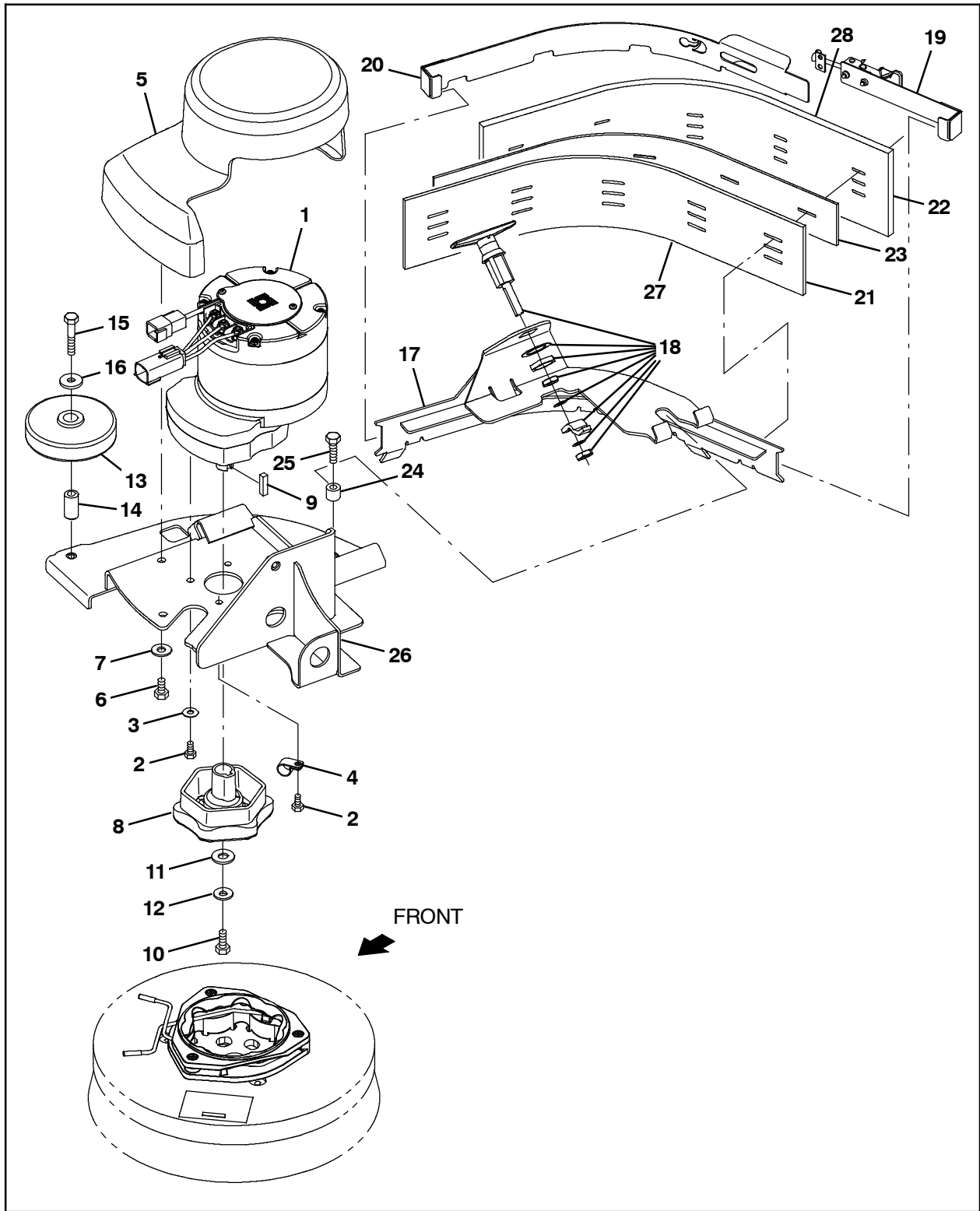


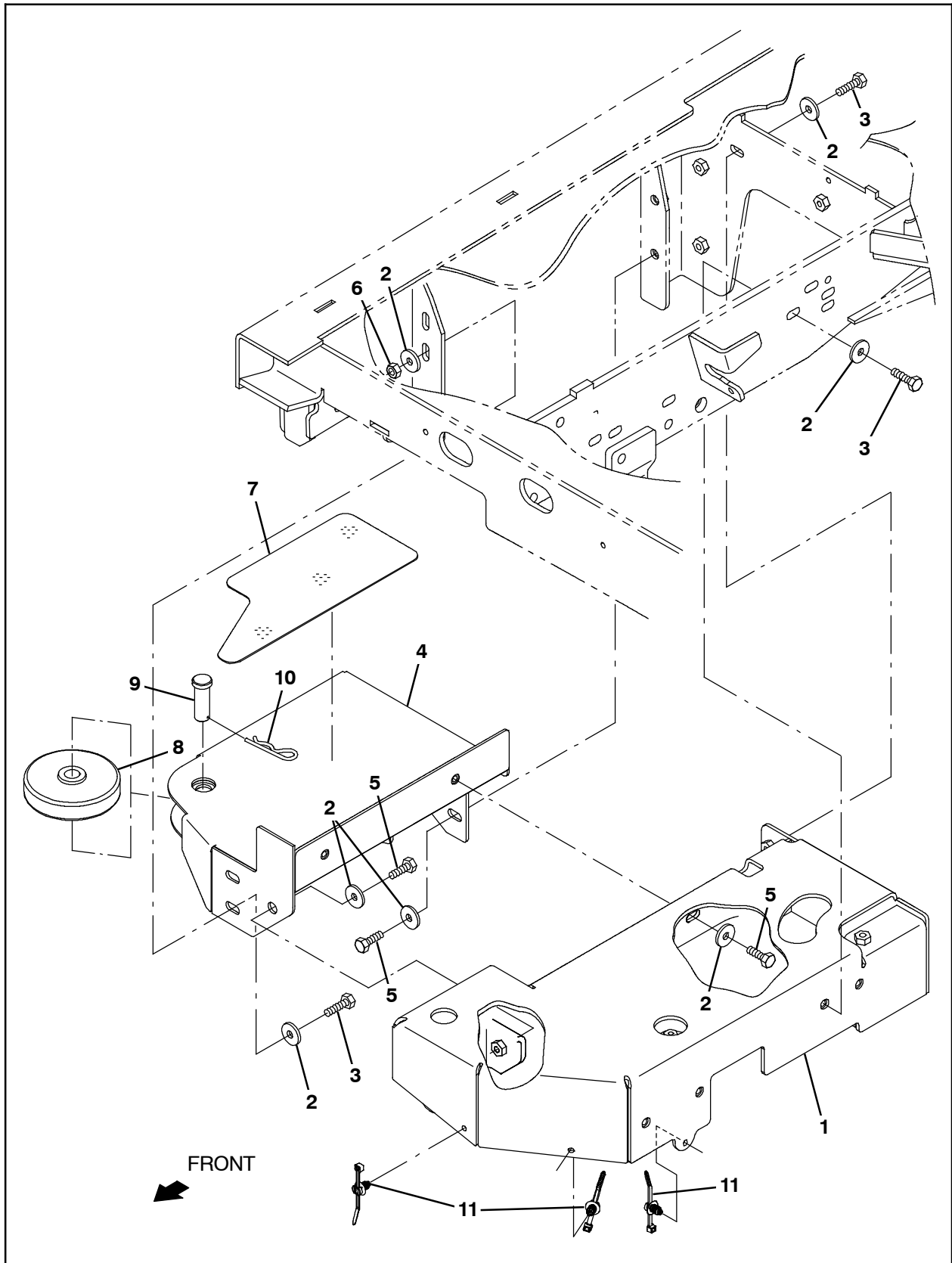
FIG. 1 - Scrubbing Side Brush Lift Group

Ref.	Tenant Part No.	Description	Qty.
1	1201500	Actuator, 36vdc, 2.75strk, 450lb	1
2	33930	Screw, Hex, M6 X 1.00 X 40, SS	1
3	1206722	Sleeve, P/M, 0.25b 0.38d 0.8l	1
4	01684	Washer, Flat, 0.27b 0.69d .05, SS	1
▽	9015051	Pivot Arm Kit, Act, SBA, Afmkt [M17]	1
▲	5 1216279	Arm, Lift, Actuator, Mach	1
▲	6 1206723	Sleeve, P/M, 0.32b 0.50d 3.03l	1
▲	7 1054662	Bushing, Flng, 0.50b 0.59d 0.25l	2
▲	8 63233	Bushing, Sleeve, 0.50b 0.59d 0.50l, Bnz	1
9	1017218	Washer, Flat, 0.32b 1.00d .12, SS	1
10	29584	Pin, Clevis, 0.37d X 2.00l	1
11	01686	Washer, Flat, 0.44b 1.00d .08, SS	1
12	44906	Pin, Cotter, Hair, 0.38d .093 Wir	1
▽	9015052	Pivot Arm Kit, SBA, Afmkt [M17]	1
▲	13 1216252	Arm, Pivot, Mach	1
▲	14 1201101	Bushing, Flng, 1.75b 1.94d 1.50l	1
▲	15 54618	Bushing, Flng, 1.00b 1.13d 1.00l	2
▲	16 39308	Screw, Soc, M8 X 1.25 X 25, 12.9	1
▲	17 763041	Washer, Flat, Belleville, M8	1
▲	18 08713	Nut, Hex, Lock, M8 X 1.25, NI, SS	1
19	1200634	Washer, Flat, 0.48b 2.50d .12, SS	1
20	12309	Screw, Hex, M12 X 1.75 X 30, SS	1
▽	9015053	Link Kit, Upper, SBA, Afmkt [M17]	1
▲	21 1216257	Link, Upper	1
▲	22 1054662	Bushing, Flng, 0.50b 0.59d 0.25l	2
23	1210807	Wire, Tie [W/.25" Fir Tree Clip]	1
24	09011	Screw, Hex, M8 X 1.25 X 30, Ss	1
25	1207656	Sleeve, P/M, 0.32b 0.50d 0.4l [430ss]	2
26	1017218	Washer, Flat, 0.32b 1.00d .12, SS	2
▽	9015054	Channel Assy, Lift, SBA, Afmkt [M17]	1
▲	27 1216256	Channel Wldt, Link	1
▲	28 63233	Bushing, Sleeve, 0.50b 0.59d 0.50l, Bnz	1
▲	29 54618	Bushing, Flng, 1.00b 1.13d 1.00l	2
30	1210581	Pin, Pivot, SBA	1
31	08713	Nut, Hex, Lock, M8 X 1.25, NI, SS	2
32	1210312	Screw, Hex, M8 X 1.25 X 120, SS	1
33	1209678	Pin, Pivot, SBA	1
34	06942	Screw, Hex, M6 X 1.00 X 16, 8.8	2
35	01684	Washer, Flat, 0.27b 0.69d .05, SS	2
36	386299	Screw, Hex, M8 X 1.25 X 100, SS	1
37	1217005	Clevis, Rotation, 0.31pin, M6x1.0	2
38	04743	Pin, Clevis, 0.31d X 1.12l	2
39	39005	Pin, Cotter, .094 X 0.75	2
▽	9015055	Spring Assy, Replmt, Afmkt [M17]	1
▲	40 1216310	Tube Wldt, Spring	1
▲	41 1216313	Rod, Thrd, 2 End, M8 X 1.25 09.1l	1
▲	42 1216314	Support, Spring	1
▲	43 1200863	Retainer, Spring	1
▲	44 1218129	Spring, Cmpr, 1.05od .14wir 10.3l	1
▲	45 1216315	Washer, Guide	1
▲	46 39311	Nut, Hex, Std, M8 X 1.25	3
▲	47 1217598	Rod- End, M8 X 1.25rh Fem 8mmb	2
48	12333	Screw, Hex, M8 X 1.25 X 25, SS, NI	1
49	386299	Screw, Hex, M8 X 1.25 X 100, SS	1
50	1011719	Washer, Flat, 0.33b 1.38d .08, SS	4



**FIG. 2 - Scrubbing Side Brush Motor And Squeegee Group**

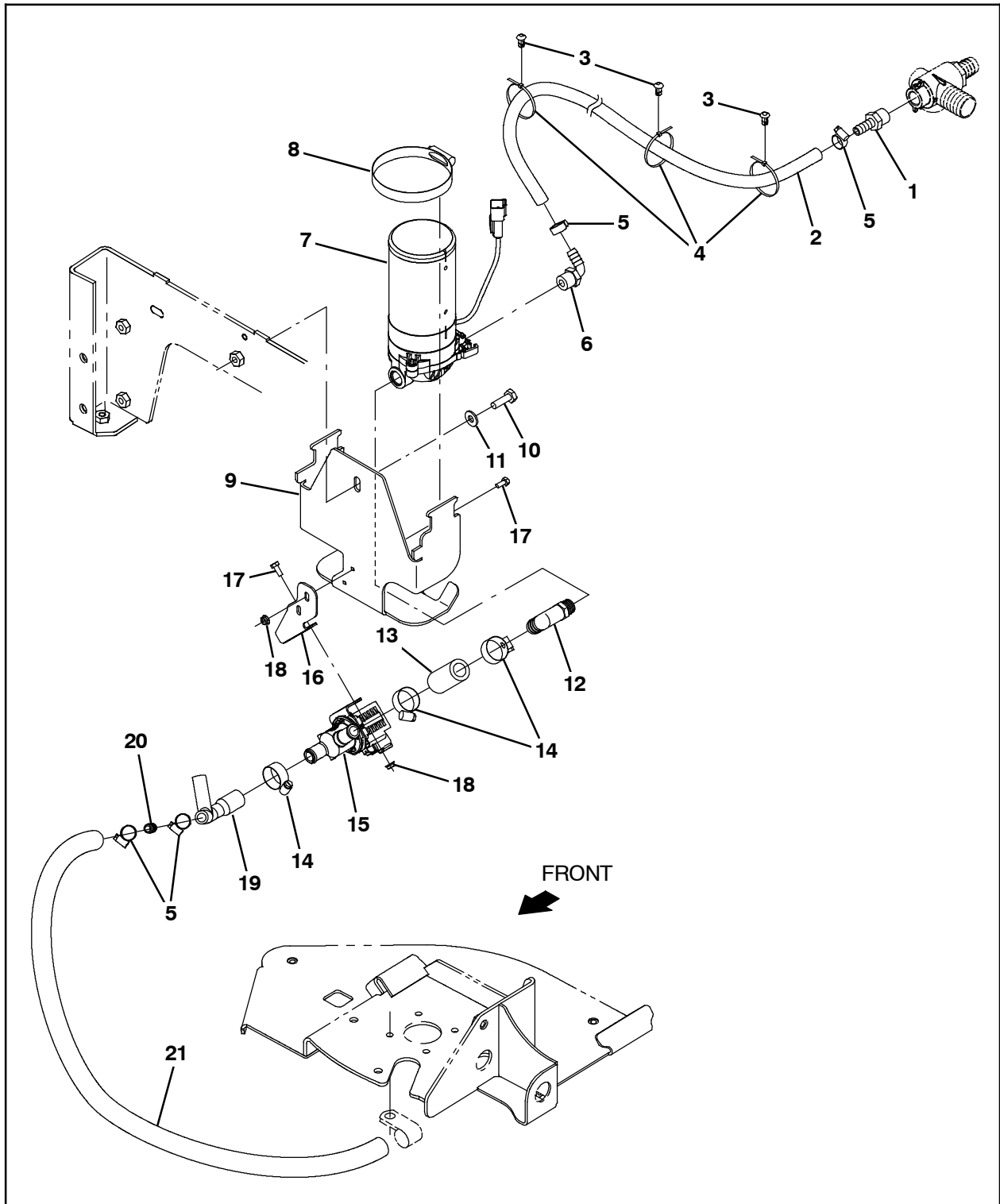
Ref.	Tenant Part No.	Description	Qty.
1	1206475	Motor, Ele, 36 Vdc, 350 Rpm 1.25 HP Gear	1
2	11635	Screw, Hex, M6 X 1.00 X 12, NI, SS	4
3	01684	Washer, Flat, 0.27b 0.69d .05, SS	3
4	26395- 1	Clamp, Cable, Stl, 0.56d X 0.38w, 1hole	1
5	9020217	Cover, Motor, SBA, Afmkt [T17]	1
6	15675	Screw, Hex, M8 X 1.25 X 16, SS	2
7	01685	Washer, Flat, 0.38b 0.88d .08, SS	2
8	377364	Hub, Drive, Brush, Disk, 0.75b [6t]	1
9	00928	Key, Sq, 0.25 X 0.25, 1.00l	1
10	12273	Screw, Hex, M8 X 1.25 X 20, NI, SS	1
11	01686	Washer, Flat, 0.44b 1.00d .08, SS	1
12	41186	Washer, Flat, Belleville, .31	1
13	363162	Wheel, 04.0d 0.89w 0.64b	1
14	363301	Sleeve, P/M, 0.34b 0.63d 1.2l, Bnz	1
15	222505	Screw, Hex, M8 X 1.25 X 45, SS	1
16	1017218	Washer, Flat, 0.32b 1.00d .12, SS	1
▽	9015056	Squeegee Assy, SBA, Afmkt [M17]	1
▲	17 1216303	Bracket Wldt, Sqge, SBA	1
▲	18 1201149	Latch, Compression, Sqge, SBA	1
▲	19 1223001	Retainer Wldt, Sqge, SBA	1
▲	20 1216323	Retainer Wldt, Sqge, SBA	1
▲	21 1216319	Blade, Sqge, SBA, Inner [Linard]	1
▲	22 1216321	Blade, Sqge, SBA, Linatex	1
▲	23 1216320	Spacer, Blade	1
24	80409	Sleeve, P/M, 0.34b 0.63d 0.6l, Bnz	1
25	09011	Screw, Hex, M8 X 1.25 X 30, SS	1
26	1216300	Bracket Wldt, Deck	1
27	1224935	Blade, Sqge, SBA, Inner, Urethane	1
27	1224938	Blade, Sqge, SBA, Inner, Gum	1
28	1224933	Blade, Sqge, SBA, Urethane	1
28	1224934	Blade, Sqge, SBA, Gum	1



**FIG. 3 - Scrubbing Side Brush Mount Group**

<b>Ref.</b>	<b>Tennant Part No.</b>	<b>Description</b>	<b>Qty.</b>
1	1216258	Cover Wldt, SBA	1
2	1017218	Washer, Flat, 0.32b 1.00d .12, SS	14
3	09011	Screw, Hex, M8 X 1.25 X 30, SS	7
4	1216293	Bracket Wldt, Step, SBA	1
5	09010	Screw, Hex, M8 X 1.25 X 25, SS	5
6	08713	Nut, Hex, Lock, M8 X 1.25, NI, SS	2
7	1218279	Tread, Non-Skid- Step, 7.0w 11.2l, SBA	1
8	363162	Wheel, 04.0d 0.89w 0.64b	1
9	1207866	Pin, Clevis, 0.625d X 1.75l	1
10	55094	Pin, Cotter, Hair, 0.75d .148 Wir	1
11	1210807	Wire, Tie [W/.25" Fir Tree Clip]	3

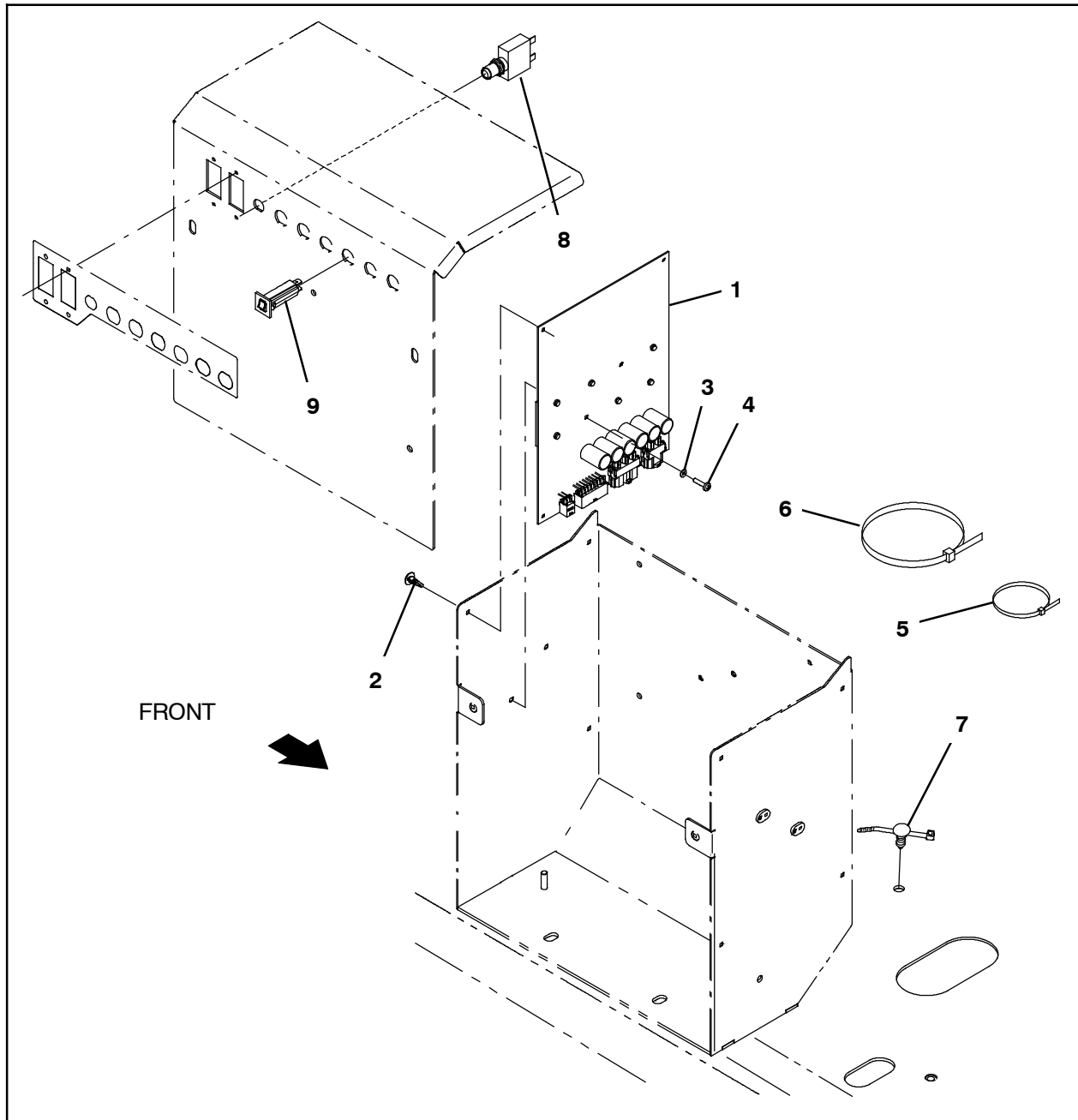




**FIG. 4 - Scrubbing Side Brush Solution Supply Group**

<b>Ref.</b>	<b>Tennant Part No.</b>	<b>Description</b>	<b>Qty.</b>
1	150538	Fitting, Plstc, Str, Bm06/Pm06	1
2	1006400	Hose, Afmkt, Pvc, Brd, 0.38id, 03ft, Clr	1
3	1071085	Clip, Tie, 0.25d, Plstc	3
4	130773	Tie, Cable, Nyl, 11.0l, .14w, 3.0 Max. D	3
5	43844	Clamp, Hose, Wormdrive, 0.25- 0.62d, .31w	4
6	1005630	Fitting, Plstc, E90, Bm06/Pm06, Nyl	1
7	1200328	Pump, Soltn, Ele, 36vdc, 60psi	1
8	43555	Clamp, Hose, Wormdrive, 2.62- 3.50d	1
9	1221952	Bracket, Pump	1
10	09010	Screw, Hex, M8 X 1.25 X 25, SS	1
11	32490	Washer, Flat, 0.25, Std	1
12	1208433	Fitting, Plstc, E90, Bm10/Pm06	1
13	1015025	Hose, Afmkt, Pvc, Brd, 0.62id, 02ft, Clr	1
14	63810	Clamp, Hose, Wormdrive, 0.56- 1.06d, .56w	3
15	1054795	Valve, Water, Solenoid, 36vdc Bm12/Bm12	1
16	1208434	Bracket, Mount, SBA Valve	1
17	09738	Screw, Hex, M5 X 0.80 X 12, SS	4
18	07789	Nut, Hex, Flng, M5 X 0.80	4
19	1208432	Manifold, SBA	1
20	20950	Fitting, Plstc, Str, Bm06/Bm06	1
21	1014976	Hose, Afmkt, Pvc, Brd, 0.38id, 08ft, Clr	1

**BILL OF MATERIALS FOR**



**FIG. 5 - Scrubbing Side Brush Electrical Group**

Ref.	Tennant Part No.	Description	Qty.
▽ 1	9020230	Circuit Board Kit, SBA, Afmkt [T17]	1
▲ 2	1210399	Stand- Off, Circuit Board [0.25"]	4
3	1202860	Washer, Flat, 0.17b 0.31d .03, Nyl	2
4	06926	Screw, Pan, Phl, M4 X 0.70 X 10, 4.8	2
5	763114	Tie, Cable, 11.3l, 2.75d Max	3
6	222809	Tie, Cable, Nyl, 29.8l .30w 9.0 Max D	1
7	1210807	Wire, Tie [W/.25" Fir Tree Clip]	7
8	383726	Circuit Breaker, 35.0a, Resettable	1
9	1064184	Circuit Breaker, 02.5a, Resettable	1

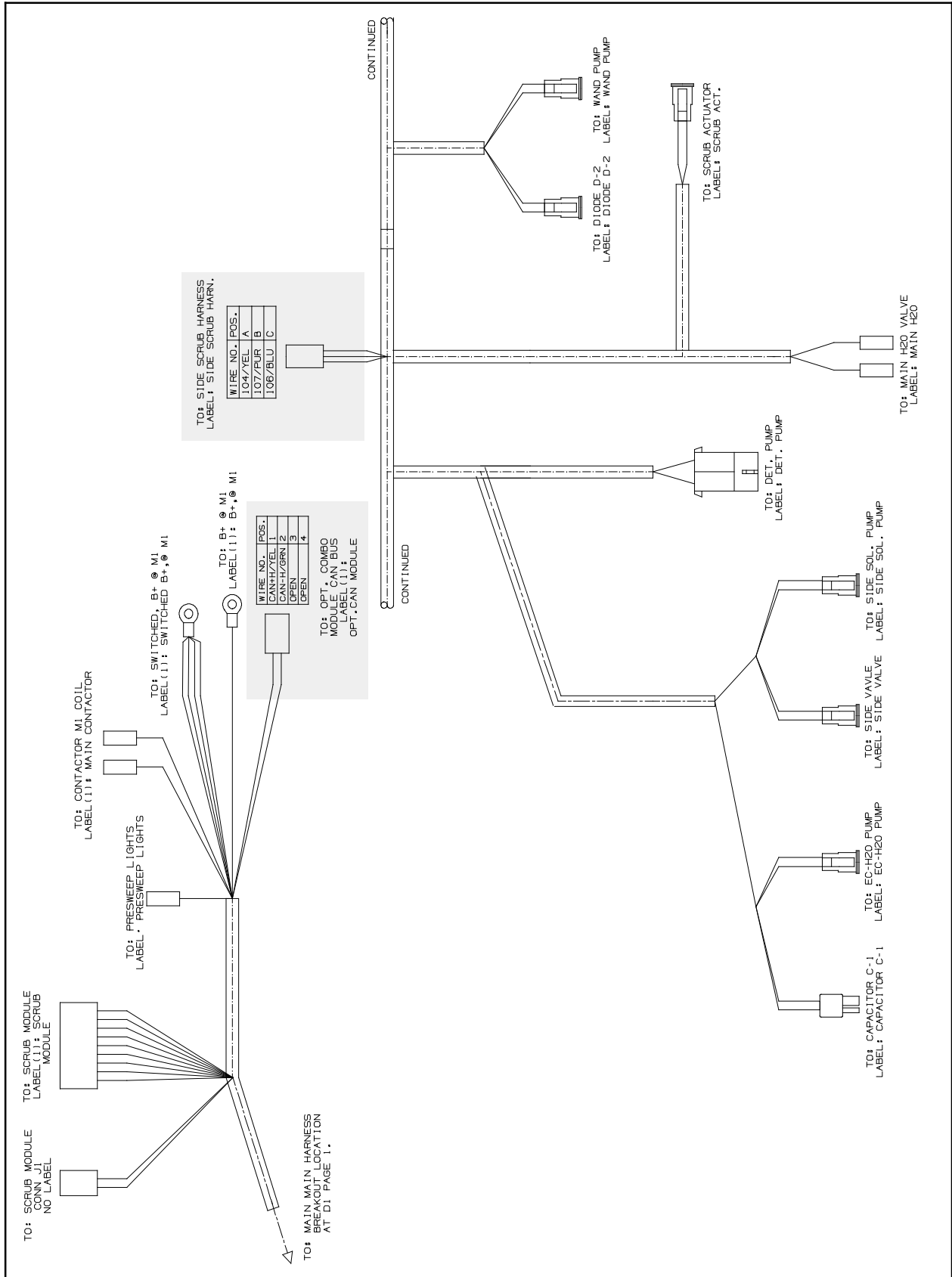


FIG. 6 - Main Wire Harness Group

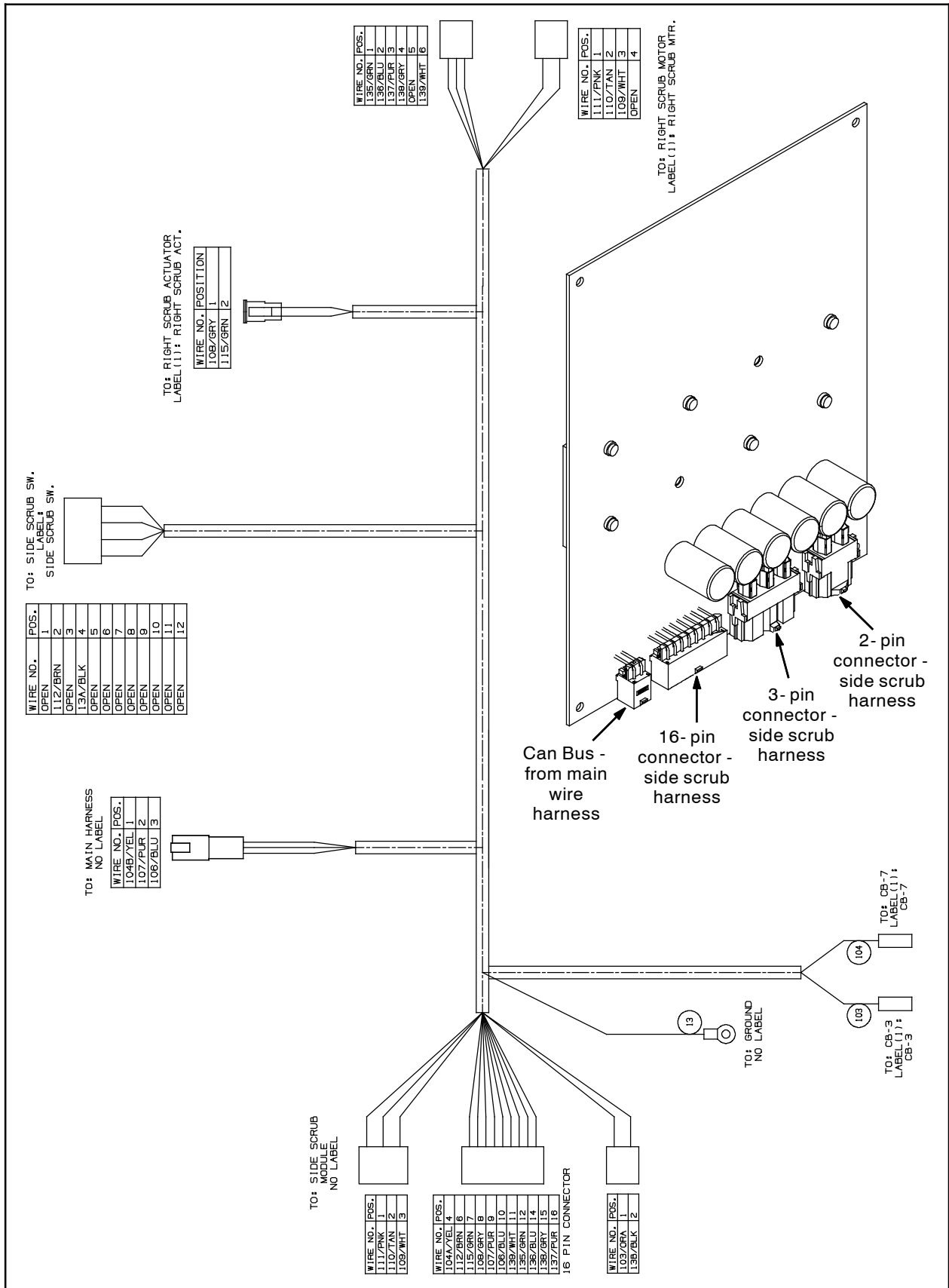


FIG. 7 - Scrubbing Side Brush Wire Harness Group/Circuit Board

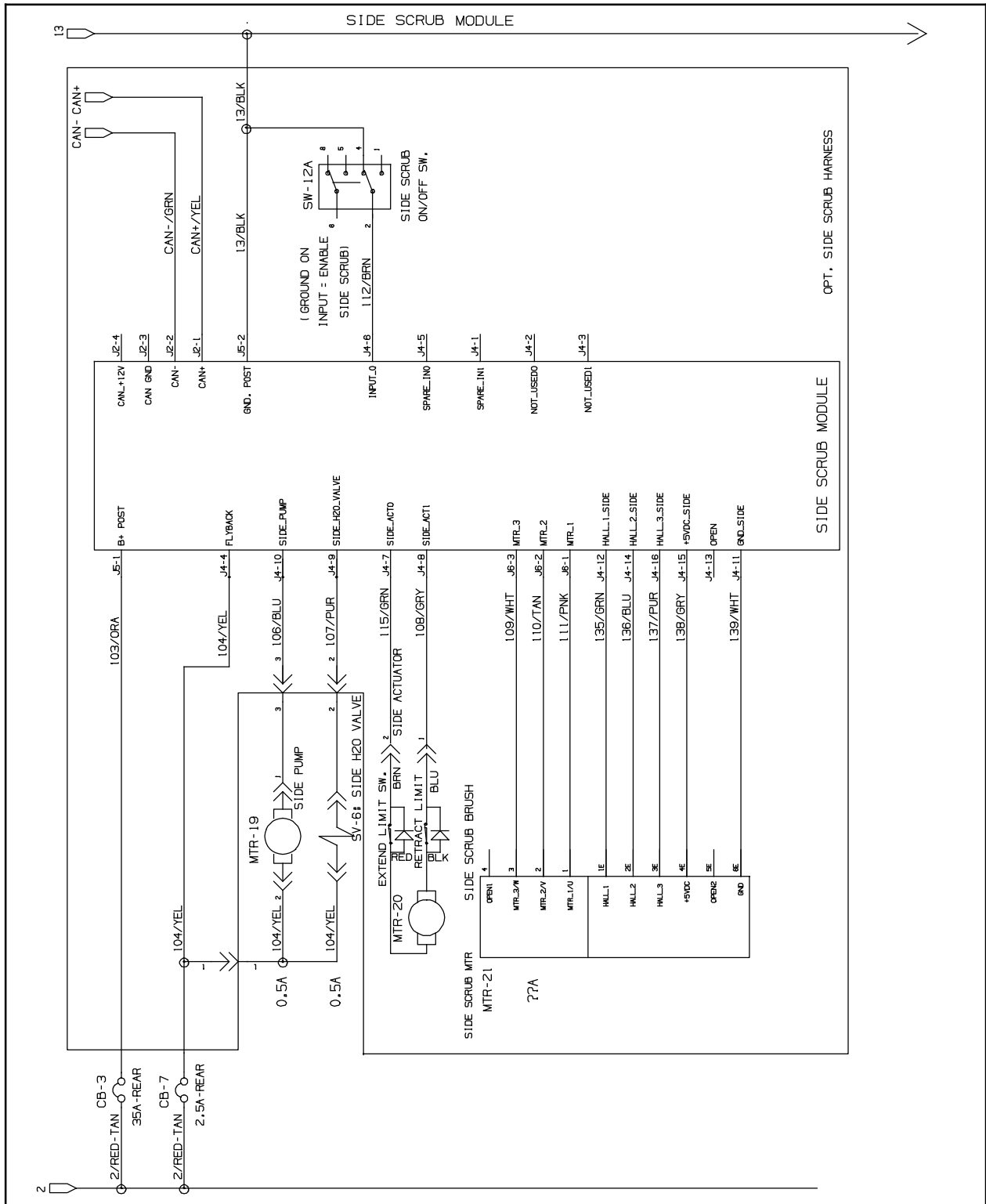


FIG. 8

TENNANT COMPANY  
 P. O. Box 1452  
 Minneapolis, MN 55440-1452